

Report to the Community

PUBLISHED 2020



2018-2019

How First 5 Kern programs have impacted the children and families of Kern County

From the Executive Director



First 5 Kern is honored to share results from our funded programs for the 2018-2019 fiscal year in our Report to the Community.

It is our hope that within these pages, you will learn more about the programs and services that we support in an effort to serve children 0-5 and their families in Kern County.

Right now, our programs and our community have perhaps never been through a more trying time. And while our programs have all been affected, it is evident that every single one of our programs provides a vital need for the families they serve.

In fiscal year 2018-2019 First 5 Kern funding passed the \$200 million mark. A lot of families benefited, and there is no question that funding has done a lot of positive work throughout our county. We are also aware that many of these services are provided solely because of Proposition 10 funding.

We continue to direct most our funding toward the focus areas of health and wellness, parent education and support services, and early child care and education. Our fourth focus area, integration of services, is becoming an increasingly urgent effort.

It is our commitment to working with other agencies that has led to us distributing nearly 1,000 cases of diapers throughout the community and dozens of pallets of cleaning supplies to childcare providers during this pandemic. More opportunities will open up to stretch our resources as we lean on the combined strength of the First 5 network statewide, and our local network of partners.

Our new funding cycle begins this summer, and with it comes new programs and resources for our community. Many of our current programs are continuing, proving the power of their efforts and the needs that exist for our families. We would like to thank all of our funded partners for the work they do every day, and we are proud to submit this report on behalf of the children and families of Kern County.

Roland Maier
Executive Director

The First 5 Kern Vision

All Kern County children will be born into and thrive in supportive, safe, loving homes and neighborhoods and will enter school healthy and ready to learn.

The Mission

To strengthen and support the children of Kern County, 0 to 5-years-old, and their families, by empowering providers through the integration of services with an emphasis on:

- Health and Wellness
- Parent Education and Support Services
- Early Childcare and Education

Our Charge

First 5 Kern was established in 1998 when California voters passed Proposition 10, The California Children and Families Act, which levied a 50-cent tax on each pack of cigarettes and other tobacco products sold. Revenues generated from the tobacco tax are used to fund local programs that promote early childhood development for children ages 0 to 5 in the areas of health and wellness, parent education and support services, early childcare and education, and integration of services.

The First 5 Years Last Forever

Ninety percent of the human brain develops in the first five years, more than any other time in life. How children are nurtured, cared for, and the environment they live in affects their emotional, physical, and intellectual well-being. The relationships and experiences a child has with parents, caregivers, and other adults significantly influence how a child will function in school and throughout their life.

Our Commitment Continues

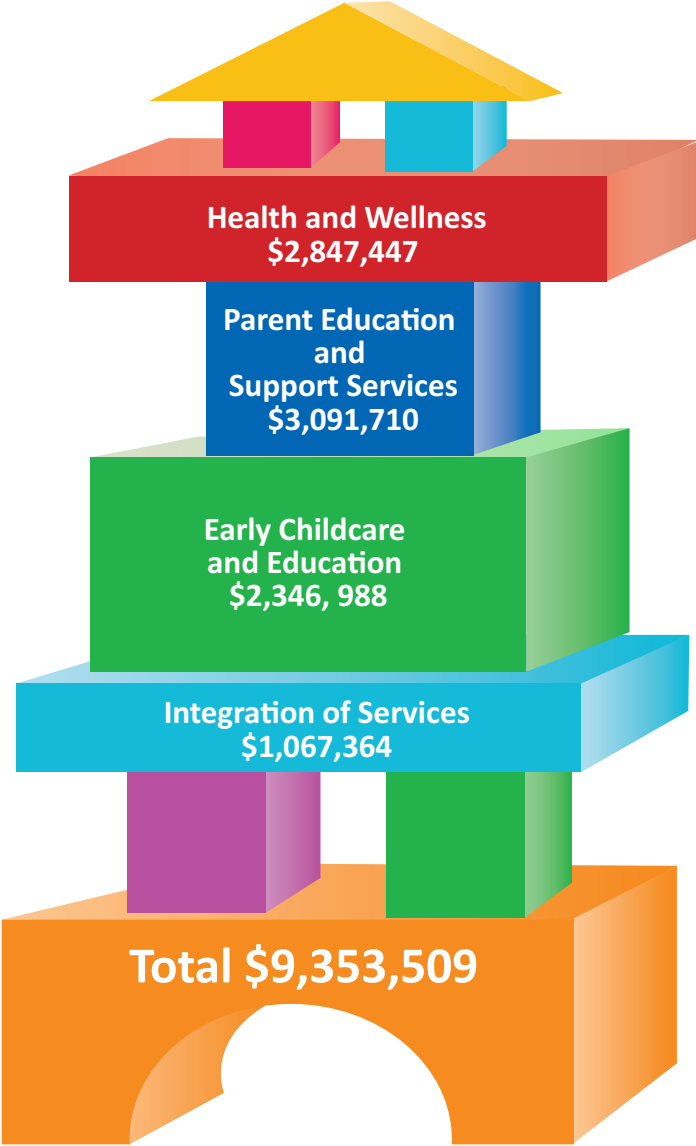
First 5 Kern is committed to using Kern County’s tobacco tax dollars efficiently to support quality services. We aim to help our funded partners to be successful, and we work closely with them in all aspects of their operations.

First 5 Kern closely monitors every contract to ensure programs are achieving results and meeting their performance measures. Staff provides training and technical assistance to help build the capacity of all our funded partners and to support their success.

NOTES
• First 5 Kern is the designated Children and Families Commission for the County of Kern.
• “Children” refers to the ages of 0 to 5-years-old.
• “To date” reflects up to the 2018-2019 fiscal year.
• “First 5” reflects First 5 Kern unless otherwise stated (e.g., First 5 California).
• “Focus Areas” are selected through a formal strategic planning process.

Community Investment and Impact

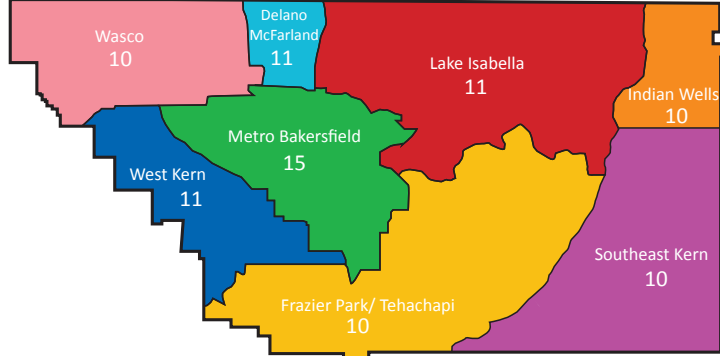
First 5 Kern funds services and initiatives that empower families and create a strong, sustainable support system for young children in Kern County.



First 5 Kern also enhanced local support through partnerships, with \$2,805,558 in leveraged funding from 27 external sources.

- First 5 Kern 2018-19 Annual Report

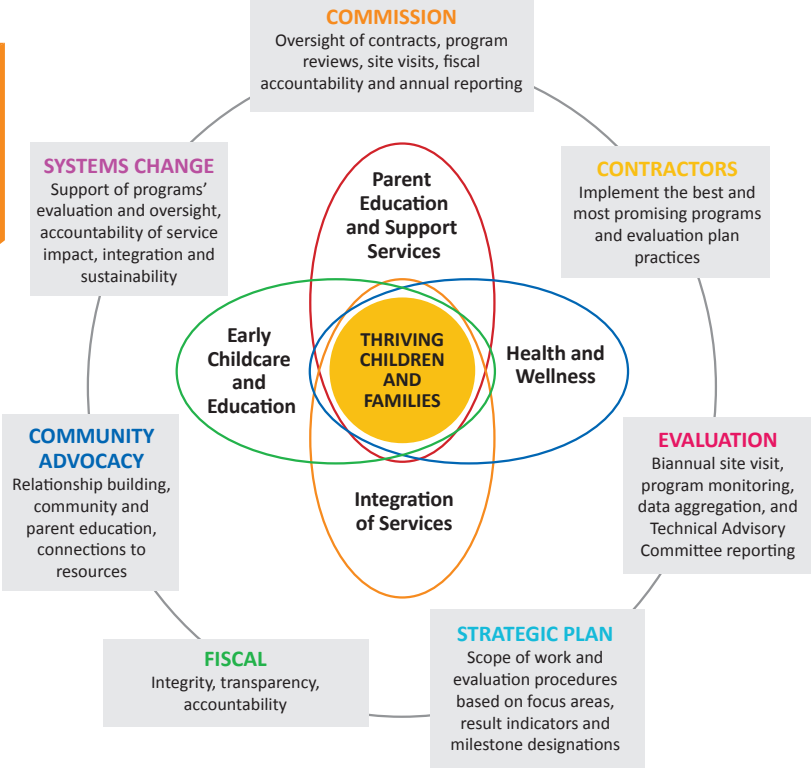
Parent Education Programs In Kern County



*Numbers are aggregated across countywide and local programs.

Family Centric Effective System

First 5 Kern incorporates a family-focused, culturally appropriate and community-based approach to improve early childhood health and development services throughout Kern County.



FOCUS AREA 1

Health and Wellness

First 5 Kern funded 13 programs addressing the health care needs of children 0 to 5-years-old, with the goal that all children will have an early start toward good health. Programs include those aimed at enrolling children and pregnant women in health insurance programs, as well as providing access to dental screenings, mental health services, immunizations, and care coordination for medically vulnerable children.

Our 2018-19 funded programs and partners:

- Black Infant Health Program (County of Kern Public Health Services Department)
- Community Health Initiative of Kern County (Mercy Foundation - Bakersfield)
- Children’s Mobile Immunization Program (Adventist Health Bakersfield)
- Health Literacy Program (Kern High School District - Bakersfield Adult School)
- Kern County Children’s Dental Health Network (Kern County Superintendent of Schools)
- Kern Valley Aquatics Program (South Fork Union School District)
- Make A Splash (City of Bakersfield Department of Recreation and Parks)
- Medically Vulnerable Infant Program (Clinica Sierra Vista)
- Medically Vulnerable Care Coordination Project of Kern County (County of Kern Public Health Services Department)
- Nurse Family Partnership Program (County of Kern Public Health Services Department)
- Richardson Special Needs Collaborative (Kern County Superintendent of Schools)
- Special Start for Exceptional Children (Caring Corner)
- Successful Application Stipend (County of Kern Public Health Services Department)



Top 3 Program Highlights from Focus Area 1

- 1 - The Children’s Mobile Immunization Program offered free health screenings for 383 children and immunizations to 882 children.
- 2 - Two swimming programs (Make A Splash and Kern Valley Aquatics Program) held first aid, swim lessons and water safety classes for 642 kids.
- 3 - The Nurse Family Partnership Program is an intensive 2-year program that delivered in-home visits by a public health nurse for 241 low-income, first-time mothers.



“Across California, First 5 county commissions have been recognized as the largest funder of home visiting programs.”

- First 5 Kern 2018-19 Annual Report

FOCUS AREA 2

Parent Education and Support Services



Top 3 Program Highlights from Focus Area 2

- 1 - 292 parents participated in Nurturing Parenting classes through seven Family Resource Centers.
- 2 - Case management services across all programs served 2,692 families and 3,293 children.
- 3 - The Domestic Violence Reduction Project helped protect 191 children from domestic violence/abuse/neglect by providing legal services to the family.

Our 2018-19 funded programs and partners:

- 2-1-1 Kern County (Community Action Partnership of Kern)
- Arvin Family Resource Center (Arvin Union School District)
- Buttonwillow Community Resource Center (Buttonwillow Union School District)
- Differential Response Services (Kern County Network for Children)
- Domestic Violence Reduction Project (Greater Bakersfield Legal Assistance, Inc.)
- East Kern Family Resource Center (Community Action Partnership of Kern)
- Greenfield School Readiness (Greenfield Union School District)
- Guardianship Caregiver Project (Greater Bakersfield Legal Assistance, Inc.)
- Help Me Grow Kern County (Community Action Partnership of Kern)
- Indian Wells Valley Family Resource Center (Clinica Sierra Vista)
- Kern River Valley Family Resource Center (Kernville Union School District)
- Lamont/Vineland School Readiness Program (Lamont School District)
- McFarland Family Resource Center (McFarland Union School District)
- Mountain Communities Family Resource Center (El Tejon Unified School District)
- Shafter Healthy Start (Richland School District)
- Southeast Neighborhood Partnership Family Resource Center (Clinica Sierra Vista)
- West Side Community Resource Center (Taft City School District)
- Women’s Shelter Network (Women’s Center - High Desert, Inc.)

FOCUS AREA 3

Early Childcare and Education

First 5 Kern supports programs with the primary objective to provide childcare with an education component. The programs offer school readiness activities and resources, developmental assessments, nutrition services, and parent education.

Our 2018-19 funded programs and partners:

- Blanton Child Development Center (Kern County Superintendent of Schools)
- Delano School Readiness (Delano Union School District)
- Discovery Depot Child Care (Bakersfield Homeless Center)
- Lost Hills Family Resource Center (Lost Hills Union School District)
- Neighborhood Place Community Learning Center (North of the River Recreation and Park District)
- Ready to Start (Ready to Start Foundation)
- Small Steps Child Development Center (Alliance Against Family Violence and Sexual Assault)
- South Fork Preschool (South Fork Union School District)
- Supporting Parents and Children for School Readiness (Bakersfield City School District)
- Wind in the Willows Preschool (Wind in the Willows Education Organization)



Top 3 Highlights from Focus Area 3:

- 1 – Children served by eight Summer-Bridge programs showed significant impact on cognitive development from the early learning services funded by First 5 Kern.
- 2 - Among programs funded by First 5 Kern, 21 service providers tracked child development with age-specific milestones for 1,708 children.
- 3 – Funding from First 5 Kern supported over 200 Early Care and Education providers and nearly 7,000 children in FY 2018-19.

“The early childcare services have addressed persistent issues of program access by children with special needs and in remote locations.”

- First 5 Kern 2018-19 Annual Report

“It is recommended to call on First 5 Kern’s leadership on establishing and strenthening the program network across different service providers.”

- Dr. Jianjun Wang, First 5 Kern Independent Evaluator



First 5 Kern organized a roundtable in Bakersfield featuring the California Surgeon General, Dr. Nadine Burke Harris, which was attended by dozens of healthcare, non-profit, and human services representatives.

FOCUS AREA 4

Integration of Services

First 5 Kern, with guidance from its Strategic Plan, allocates funds for initiatives that provide Kern County children with the foundation they need to succeed. First 5 Kern is actively involved in and supports initiatives that bring organizations together to achieve better outcomes for children and their families in our community.

Collaborations and Coalitions

First 5 Kern, with guidance from its Strategic Plan, allocates funds for initiatives that provide Kern County children with the foundation they need to succeed. First 5 Kern is actively involved in and supports initiatives that bring organizations together to achieve better outcomes for children and their families in our community.

Additionally, First 5 Kern maintains a voice at the table for collaborations across Kern County impacting children 0-5, many of whom meet regularly at the First 5 Kern office. They include:

- 34th Street Neighborhood Partnership
- Bakersfield College Child Development Advisory Committee
- Buttonwillow Community Collaboative
- Kern County Child Death Review Team
- Delano Community Connections Center
- Early Childhood Council of Kern
- East Bakersfield Community Collaborative
- East Kern Collaborative
- Fetal Infant Mortality Review
- Good Neighbor Festival Committee
- Greenfield H.E.L.P.S. Collaborative
- Head Start - Policy Council
- Health Net Kern Community Advisory Committee
- Indian Wells Valley Collaborative
- Kern Complete Count Committee - 2020 Census
- Kern County Breastfeeding Coalition
- Kern County Network for Children General Collaborative
- Kern Early Stars
- Kern River Valley Collaborative
- Lost Hills Community Collaborative
- McFarland Collaborative
- Medically Vulnerable Care Coordination Committee
- Oildale Community Partnership
- Quality Counts California
- Richardson Special Needs Collaborative
- Safe Sleep Coalition of Kern County
- Safely Surrendered Baby Coalition
- Shafter Healthy Start Collaborative
- South Chester Partnership Collaborative
- Southeast Neighborhood Partnership General Collaborative
- South Valley Neighborhood Partnership Collaborative
- Tobacco Free Coalition of Kern County
- Trauma-Informed Kern County
- West Side “Together We Can” Collaborative
- Wasco Community Collaborative

Report to the Community



@First5Kern

Commissioners

LUCINDA WASSON, CHAIRPERSON

Retired, Kern County Public Health Services Department

DENA MURPHY, VICE CHAIRPERSON

Department of Human Services

JENNIE SILL, SECRETARY

Kern Behavioral Health and Recovery Services

MICHELLE CURIOSO, TREASURER

Kern County Public Health Services Department

SUPERVISOR ZACK SCRIVNER

Kern County Board of Supervisors

RUSSELL JUDD

Kern Medical

JOHN NILON

Retired, Kern County Administrative Officer

KELLY RICHERS

Wasco Union Elementary School District

DEBBIE WOOD

Retired, Bakersfield City School District

Technical Advisory Committee

DEBBIE WOOD, Chair, Commissioner

KELLY RICHERS, Commissioner

JOHN NILON, Commissioner

RUSSELL JUDD, Commissioner

TIFFANY APPLE, Kaiser Permanente

ROSALINDA CHAIREZ, Wasco Union Elementary School District

JILL CHRISTOPHER, Department of Human Services

TOM CORSON, Kern County Network for Children

KAREN DAVIS, Arvin Family Resource Center

SHELLBY DURLAO, Kern County Public Health Services Department

JENNY GOLLEHER, Valley Children's Healthcare

KRIS GRASTY, Retired, Kern County Aging & Adult Services

ALEJANDRA GUTIERREZ, Kern Behavioral Health and Recovery Services

VALENTE GUZMAN, Early Childhood Council of Kern

DR. JEFF HANRAHAN, Clinica Sierra Vista

RUSS HASTING, Kern County Public Health Services Department

PRITIKA RAM, Community Action Partnership of Kern

REBECCA ROTH, Taft College

ISABEL C. SILVA, Kern Health Systems

JENNIFER WOOD-SLAYTON, South Valley Neighborhood Partnership

Staff

ROLAND MAIER, Executive Director

Dr. KATHLEEN J. HYLTON, Ed.D., C.P.A., Chief Finance Officer

KEVIN BARTL, Communications & Media Specialist

PAULA DE LA RIVA-BARRERA, Program Officer

CRYSTAL GARDNER, Finance Specialist

ANASTASIA LESTER, MPA, Program Officer

ANALY MARTINEZ, Program Officer

CHARLENE MCNAMA, Administrative Finance Specialist

DIANA NAVARRO, Senior Research Analyst

SHARON POWELL, Administrative Assistant

PATTI TAYLOR, Senior Finance Officer

How First 5 Kern programs have impacted the children and families of Kern County

2724 L Street, Bakersfield CA 93301

www.First5Kern.org

661.328.8888