

Report *to the* Community



2016-2017

It's all about kids and their families!

From the Executive Director



First 5 Kern is honored to present the *2016-2017 Report to the Community*, a snapshot of First 5 Kern.

The task at hand is to nurture positive health, wellness, and education outcomes for 0 to 5-years-old, and their families. Commissioners of First 5 Kern direct the funding; the Technical Advisory Committee makes recommendations; staff conduct oversight, outreach, and advocacy; and vital services and education are carried out by providers who receive First 5 funds.

With funding from the California Children and Families Act of 1998, Proposition 10, (known as the tobacco tax) First 5 Kern has allocated more than \$180 million to child development.

As a process of continual assessment, and working towards the next funding cycle, First 5 Kern staff convened 12 Town Hall meetings across the county to hear from parents and community members. Through the process, four identified needs were repeatedly identified and remain at the forefront of strategies and decision making:

- Continued parent education
- Increased pediatric health services
- Greater preschool capacity
- Improved transportation to appointments and services

As we enter our 20th year First 5 Kern remains committed to working to address these needs of families, and to improve the efficiency of systems towards educating, strengthening, and empowering families for a stronger future for Kern County.

This report is presented on behalf of the children and families we serve.

Roland Maier
Executive Director

2016-2017

19,891 Children Served

14,127 Parents Served

42 Programs Funded

\$9,206,037 Invested

The First 5 Kern Vision

First 5 Kern envisions that all Kern County children will be born into and thrive in supportive, safe, loving homes and neighborhoods; and will enter school healthy and ready to learn.

The Mission

First 5 Kern works to strengthen and support the children of Kern County, 0 to 5-years-old, and their families, by empowering providers through the integration of services with an emphasis on:

- Health and Wellness
- Parent Education and Support Services
- Early Child Care and Education

The First 5 Years Last Forever

Ninety percent of the human brain develops in the first five years, more than any other time in life. How children are nurtured, cared for and the environment they live in affects their emotional, physical, and intellectual well-being. The relationships and experiences a child has with parents, caregivers, and other adults significantly influence how a child will function in school and throughout their life.

Our Commitment Continues

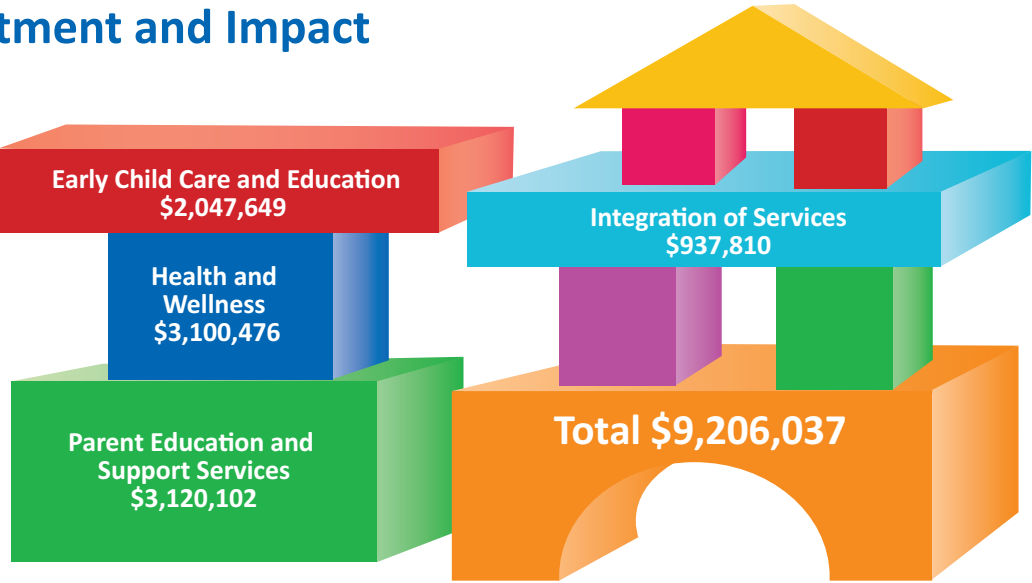
First 5 Kern is committed to using Kern County’s tobacco tax dollars efficiently to support quality services. We aim to help our funded providers to be successful, and we work closely with them in all aspects of their operations.

First 5 Kern closely monitors every contract to ensure programs are achieving results and meeting all their performance measures. Staff provides training and technical assistance to help build the capacity of all our funded partners and to support their success.

- NOTES**
- First 5 Kern is the designated Children and Families Commission for the County of Kern.
 - “Children” refers to the ages of 0 to 5-years-old.
 - “To date” reflects up to the 2016-2017 fiscal year.
 - “First 5” reflects First 5 Kern unless otherwise stated (e.g., First 5 California).
 - “Focus Areas” are selected through a formal strategic planning process.
 - SOURCE: First 5 Kern Annual Report 2016-2017

Community Investment and Impact

First 5 Kern funds services and initiatives that empower families and create a strong, sustainable support system for young children in Kern County.

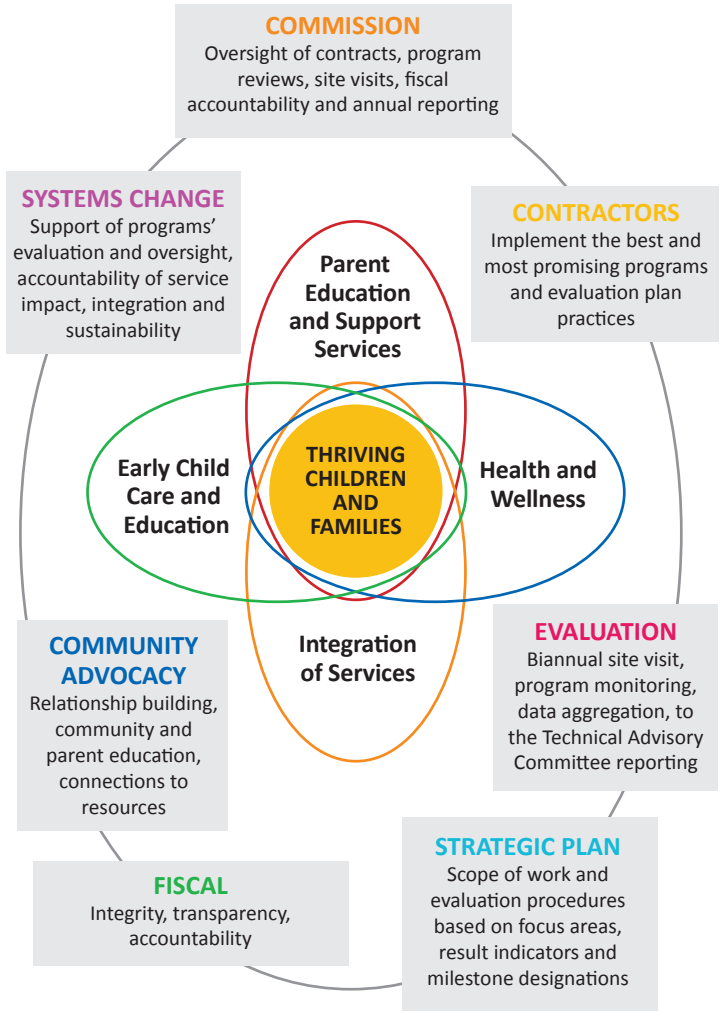


Highlights

- Dental screenings were provided to 4,912 children.
- More than 1,500 children received immunizations from the Children’s Mobile Immunization Program.
- Nineteen programs offered center-based services to 1,081 children.
- Ninety percent of children received all immunizations across 19 programs.
- Ninety-one percent of parents/guardians reported their child received a well-child check-up; an increase of 82%.
- The average rate of mothers who were breastfeeding increased from 64% to 77% in 15 programs.
- Seventy percent of parents/guardians reported reading to their children two or more times per week, an increase from 59% in the previous year.
- Summer bridge pre- and post-test assessments demonstrated improved school readiness among 362 children. Summer bridge is a transitional kindergarten and kindergarten readiness program.
- In 18 programs, 1,570 children were shown to be significantly higher performing than similar, non-First 5 program participants. This is measured through the Ages and Stages Questionnaire-3, an assessment tool designed to screen a child’s developmental milestone performance.
- Review of the Desired Results Developmental Profile (DRDP) assessment indicated strong improvements for infants, toddlers, and preschoolers in nine programs. DRDP is a tool used by teachers to record individual progress.
- Parents who participated in six court-mandated parent education programs showed significant, increased understanding of the appropriate treatment and care of a child.
- Increases refer to the improvements over the previous fiscal year.

Family Centric Effective System

First 5 Kern incorporates a family-focused, culturally appropriate and community-based approach to improve early childhood health and development services throughout Kern County.



FOCUS AREA 1
Health and Wellness

First 5 Kern funded 13 programs addressing the health care needs of children 0 to 5-years-old, with the goal that **“all children will have an early start toward good health.”** According to the Strategic Plan, the objectives of the funding are that pregnant women will be linked to early and continuous care and children will be:

- Enrolled in health insurance programs.
- Provided with health, dental, mental health, developmental and vision screenings, and preventative services.
- Referred to appropriate services when they have identified special needs.
- Taught to develop early healthy habits through nutrition and/or fitness education.
- Provided with safety education and/or injury prevention services, along with their parents.

FUNDED HEALTH AND WELLNESS PROGRAMS

- Bakersfield Adult School Health Literacy Program, Kern High School District
- Black Infant Health, County of Kern Public Health Services Department
- Community Health Initiative of Kern County, Mercy Foundation - Bakersfield
- Children’s Mobile Immunization Program, Adventist Health Bakersfield
- Kern County Children’s Dental Health Network, West Kern Community College District
- Kern Valley Aquatics Program, South Fork Union School District
- Make A Splash, City of Bakersfield Department of Recreation and Parks
- Medically Vulnerable Infant Program, Clinica Sierra Vista
- Medically Vulnerable Care Coordination Project, County of Kern Public Health Services Department

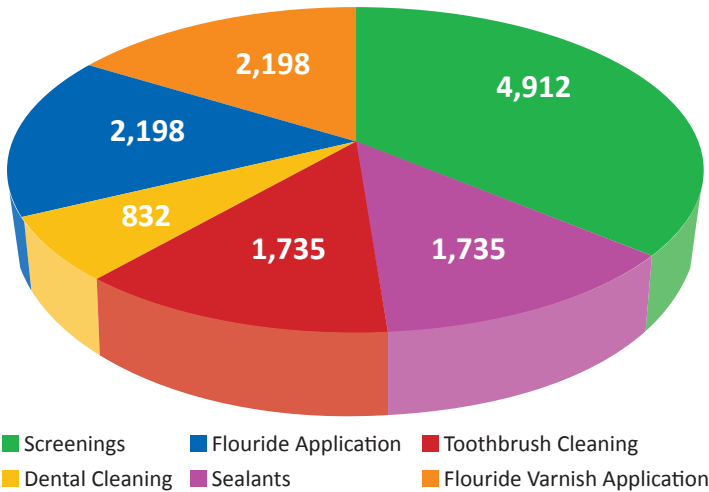


Kern Valley Aquatics Program



Kern County Children's Dental Health Network

ORAL HEALTH SERVICES



FOCUS AREA 2
Parent Education and Support Services



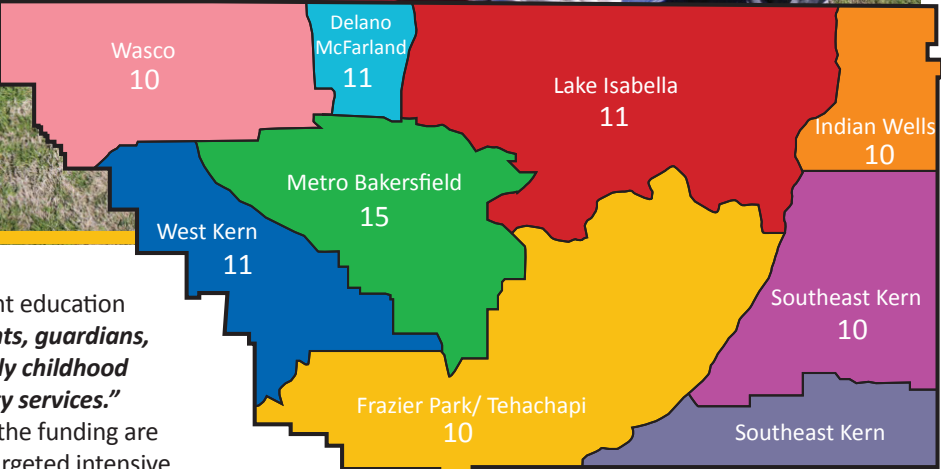
Greenfield School Readiness Program

First 5 Kern funded 18 programs addressing parent education and support services with the goal that **“all parents, guardians, and caregivers will be knowledgeable about early childhood development, effective parenting and community services.”** According to the Strategic Plan, the objectives of the funding are that children and families will be provided with targeted intensive and/or clinical family support services. Parents and guardians will be provided with social services and:

- Culturally-relevant parenting education and supportive service.
- Educational services to increase family reading and/or literacy.

FUNDED PARENT EDUCATION AND SUPPORT SERVICES PROGRAMS

- 2-1-1 Kern County, Community Action Partnership of Kern
- Arvin Family Resource Center, Arvin Union School District
- Buttonwillow Community Resource Center, Buttonwillow Union School District
- Differential Response, Kern County Network for Children
- Domestic Violence Reduction Project, Greater Bakersfield Legal Assistance, Inc.
- East Kern Family Resource Center, Community Action Partnership of Kern
- Greenfield School Readiness Program, Greenfield Union School District
- Guardianship Caregiver Project, Greater Bakersfield Legal Assistance, Inc.
- Help Me Grow Kern County, Community Action Partnership of Kern



PARENT EDUCATION PROGRAMS IN KERN COUNTY

*Numbers are aggregated across countywide and local programs.

- Indian Wells Valley Family Resource Center, Clinica Sierra Vista
- Kern River Valley Family Resource Center - Great Beginnings Program, Kernville Union School District
- Lamont Vineland School Readiness Program, Lamont School District
- McFarland Family Resource Center, McFarland Union School District
- Mountain Communities Family Resource Center, El Tejon Unified School District
- Shafter Healthy Start, Richland School District
- Southeast Neighborhood Partnership Family Resource Center, Clinica Sierra Vista
- West Side Community Resource Center, Taft City School District
- Women’s Shelter Network, Women’s Center-High Desert, Inc.



Neighborhood Place Community Learning Center

FOCUS AREA 3 Early Child Care and Education

First 5 Kern funded 10 programs addressing early child care and education with the goal that “early child care and education services will be accessible.” According to the Strategic Plan, the objectives of the funding are that:

- Children will enter school prepared as a result of their participation in early childhood and education and child care services.
- Special population children (e.g., non-traditional hours and/or children with special needs) will have access to early childhood education and child care services.

FUNDED EARLY CHILD CARE PROGRAMS

- Blanton Child Development Center, Kern County Superintendent of Schools
- Delano School Readiness, Delano Union School District
- Discovery Depot Child Care Center, Bakersfield Homeless Center
- Lost Hills Family Resource Center, Lost Hills Union School District
- Neighborhood Place Community Learning Center, North of the River Recreation and Park District
- Ready to Start, Ready to Start Foundation
- Small Steps Child Development Center, Alliance Against Family Violence and Sexual Assault
- South Fork Preschool and Day Care Center, South Fork Union School District
- Supporting Parents and Children for School Readiness, Bakersfield City School District
- Wind in the Willows Preschool, Wind in the Willows Education Organization

FOCUS AREA 4

Integration of Services

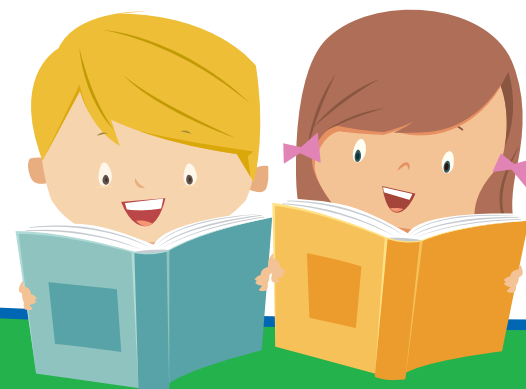
First 5 Kern works within the community to build relationships to facilitate the creation and implementation of integrated and collaborative systems of information. It is a component of all focus areas, advocacy, and outreach. The effort enhances service system building, optimizes early childhood development and strengthens Kern families. The goal of this focus area is that “a well-integrated system of services for children and families will exist.” According to the Strategic Plan, the objectives of the funding are to support:

- Community health improvement efforts support integration of services for the health and wellness of children and their families.
- Community support service improvement efforts, that support the integration of services for parent education and support services.
- Community improvement efforts that support integration of services for early child care and education.
- Community strengthening efforts that support education and community awareness.

The policy agenda of First 5 Association of California calls for the work of First 5 commissions “to invest in and improve coordination across systems of care, to efficiently connect young children to early intervention.” This concurs with international trends towards the integration of services for young children and their families, incorporating child care, education, health and family support.

DURING THE 2016-2017 FISCAL YEAR

- The combined funded programs reported 140 primary partnerships beyond the traditional service level. More than 600 mutual partnerships and more than 1,600 directly linked relationships were measured.
- Meetings at 11 program sites, with 124 service providers, established and reviewed a standardized transition plan for strengthening school readiness. The sessions provided the staff of funded providers, parent educators, preschool teachers, and district supervisors with an opportunity to meet and discuss gaps in preschool education.
- Collaborative meetings provided an opportunity for 325 staff of funded providers and community partners to participate in collaborative meetings, designated training, and educational services focused on child health and wellness support.
- Educational events were attended by 224 providers covering early childhood topics organized by the Medically Vulnerable



Care Coordination Project.

Initiatives and Efforts

First 5 Kern, with guidance from its Strategic Plan, allocates funds for initiatives that provide Kern County children with the foundation they need to succeed. First 5 Kern is actively involved in and supports initiatives that contribute to the overall mission of First 5 across the state.



- **Community Collaborative** efforts involve a collection of organizations and people representing businesses, government, nonprofits, schools, and community residents, all of whom are passionate about the well-being of children.

• **The Community Health Initiative** provides quality health care to children who are without health services, with the goal of providing health coverage and connecting them to medical and dental homes. This effort further ensures children obtain early health care and developmental screenings.

- **Purple Ribbon Month** designates the month of July in memory of Kaitlyn Russell. Kaitlyn’s Law makes it a citable offense for parents to leave children under 6-years-old unattended in a motor vehicle without supervision of someone at least 12-years of age.
- **Safe Sleep** is an effort to protect infants from Sudden Infant Death Syndrome and other dangers by putting babies to sleep on their back, on a flat firm surface in their own bed, without any blankets, bumpers or toys.
- **The Safely Surrendered Baby Law** saves lives of newborn infants at risk of abandonment by allowing parents or persons with lawful custody, to safely surrender the infant within 72 hours of birth to a hospital emergency room or fire department, with no questions asked.
- **Talk.Read.Sing** is an effort of First 5 California and the “Too Small to Fail” initiative. The “Talking is Teaching: Talk.Read.Sing” public awareness and action campaign help parents and caregivers recognize their power to boost children’s early brain and vocabulary development through simple, everyday actions – like describing things while walking outside, or singing songs together at bath time. “Talking is Teaching” empowers parents and caregivers with fun and easy ways to improve their babies’ learning.
- **Town Hall Meetings** are conducted by First 5 Kern to obtain feedback about current and future efforts, and allow a forum for for input about the needs of parents and communities.



Town Hall Meeting in Shafter

Advocacy and Outreach

First 5 Kern strives, through outreach and advocacy, to help educate parents and caregivers about the focus areas of health and wellness, early childcare and education, parent education and support services. Staff participates in outreach opportunities of organizations, businesses, government agencies, educational entities, and nonprofits to connect with community residents, individuals, parents, and others who can be served by the funded programs of First 5 Kern. Throughout the year First 5 Kern:

- Participated in eight outreach events supporting its overall mission.
- Expanded its website to increase community education by resource libraries for parents and caregivers, funded providers and community partners. The site connects visitors to public meetings, opportunities for community feedback, networking, involvement, and interaction.
- Modified the Handprints Newsletter to become an e-newsletter and resulted in increased distribution from 1,000 paper copies quarterly to 1,560 monthly emailed versions.
- Expanded social media efforts beyond its existing Facebook and Twitter online presence. Instagram, Pinterest, and LinkedIn sites were added to become an integral component disseminating newsletters, fostering public input, interacting and information sharing directly with the parents and the public at large, and collaborating among stakeholders expanding our professional networking.



Commissioners

AL SANDRINI, CHAIRPERSON

Retired School District Superintendent

RICK ROBLES, VICE CHAIR PERSON

Retired School District Superintendent

CLAUDIA JONAH, M.D., SECRETARY

Director

Kern County Department of Human Services

SUPERVISOR MIKE MAGGARD

Kern County Board of Supervisors

LUCINDA WASSON

Retired Director of Nursing

SAM AUNAI

Vice President - Office of Instruction

Porterville College

LARRY J. RHOADES

Retired Probation Chief

Former First 5 Kern Executive Director

JENNIE SILL

Children's System of Care Administrator

Kern Behavioral Health and Recovery Services

Technical Advisory Committee

SAM AUNAI, Commissioner

TAMMY BURNS, Early Childhood Council of Kern

TOM CORSON, Kern County Network for Children

MICHELLE CURIOSO, Kern County Public Health Services Department

KAREN DAVIS, Arvin Family Resource Center

HEATHER HORNIBROOK, Kern Behavioral Health and Recovery Services

SANDY KOENIG, West Side Community Resource Center

GINA PEREZ, Kaiser Permanente

BILL PHELPS-RAMOS, Clinica Sierra Vista

ANTANETTE REED, Kern County Child Protective Services

LARRY J. RHOADES, Commissioner

REBECCA ROTH, Taft College

ISABEL C. SILVA, Kern Health Systems

JENNIE SILL, Commissioner

JENNIFER THOMPSON-SOLIS, Kern Behavioral Health and Recovery Services

DEBBIE WOOD, Bakersfield City School District

JENNIFER M. WOOD-SLAYTON, Lamont Vineland School Readiness Program

LUSINDA WASSON, Commissioner

Staff

ROLAND MAIER, Executive Director

KATHY Hylton, CPA, MPA, MSA, Chief Finance Officer

THERESA ORTIZ, Chief Evaluation / Program Officer

PAULA DE LA RIVA-BARRERA, Program Officer

CRYSTAL GARDNER, Finance Specialist

ANASTASIA LESTER, MPA, Program Officer

CHRISTINE LOLLAR, Communications and Media Specialist

ANALY MARTINEZ, Program Officer

CHARLENE MCNAMA, Administrative Finance Specialist

DIANA NAVARRO, Research Analyst

SHARON POWELL, Administrative Assistant

PATTI TAYLOR, Senior Finance Officer



2724 L Street, Bakersfield CA 93301

www.First5Kern.org

661.328.8888



@First5Kern

Home of the monthly e-newsletter:

